



FICHA TÉCNICA  
**MINI SVG/  
FILTRO ACTIVO**



*!TODO EN UNO!*



## Mini SVG/AHF (En Paralelo)



TINY DIMENSION



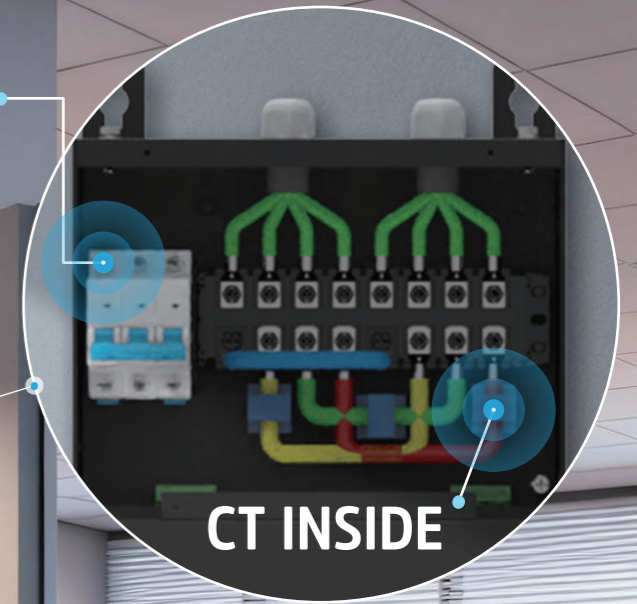
INSTALACIÓN FLEXIBLE



INCLUYE 3\* 75A/20mA CT



BREAKER INSIDE



## Mini SVG/AHF(In Series)



CT INSIDE(3\*50A/20mA)



BREAKER INSIDE



CABLEADO FÁCIL

SLD



- CT inside
- Breaker inside
- Cableado fácil: Solo es necesario que el usuario conecte el cable de alimentación

Mini SVG/AHF

Technical Specifications	AHF	SVG
Rated Capacity at 0.22kV	10 A	3 kvar
Rated Capacity at 0.4kV	10 A	5 kvar
Module Size (In Parallel)	260W*415H*165D	
Module Size (In Series)	260W*616H*160D	
Net Weight	8.5 kg	
Air Flow for Heat Dissipation	3x37CFM	
Rated Voltage	400V( 304V~456V ); 220V( 176V~264V )	
Frequency	50Hz / 60Hz (Range: 45Hz - 62.5Hz)	
Wiring Structure	3P4W(400V);3P4W&3P3W(220V)	
Harmonic Filtering	2nd ~ 50th	
Reactive Power Compensation	Adjustable from -1 to +1	
Unbalance Correction	100% imbalance correction	
Protection Function	Over-voltage protection, under-voltage protection, short-circuit protection, inverter bridge inverse protection, over-compensation protection and so on	
Current Transformer	x/20mA	
Harmonic Filter Rate	≥ 97%	
Filter Performance	THDi<5%	
Noise Level	<50dB	
Response Time	50us	
Full Response Time	<10ms	
IGBT Switching Frequency	20kHz	
Topology Design	2 level topology	
Parallel Quantities	Unlimited	
Communication Port	RS485 Communication	
Communication Protocol	Modbus Protocol	
Module Display Interface	4.3" Display/7" extra Display	
Mounting Type	Wall mounted	
Monitoring	Independent monitoring and centralized monitoring	
Standard Compliance	EN IEC 61000; EN IEC 62477; UL 508:2024	
Protection Class	IP 20 -Standard type	
Operating Temperature	-10 ~ 45°C	
Relative Humidity	5% to 95% non-condensing	
Altitude	up 2000 m. Between 2000 m to 4000 m, according to GB/T3859.2,the power decreases by 1% for every additional 100 m.	
Color	Black or Customized Color	
Note	For module (In Series) , the maximum allowable load current is 50 amps.	

